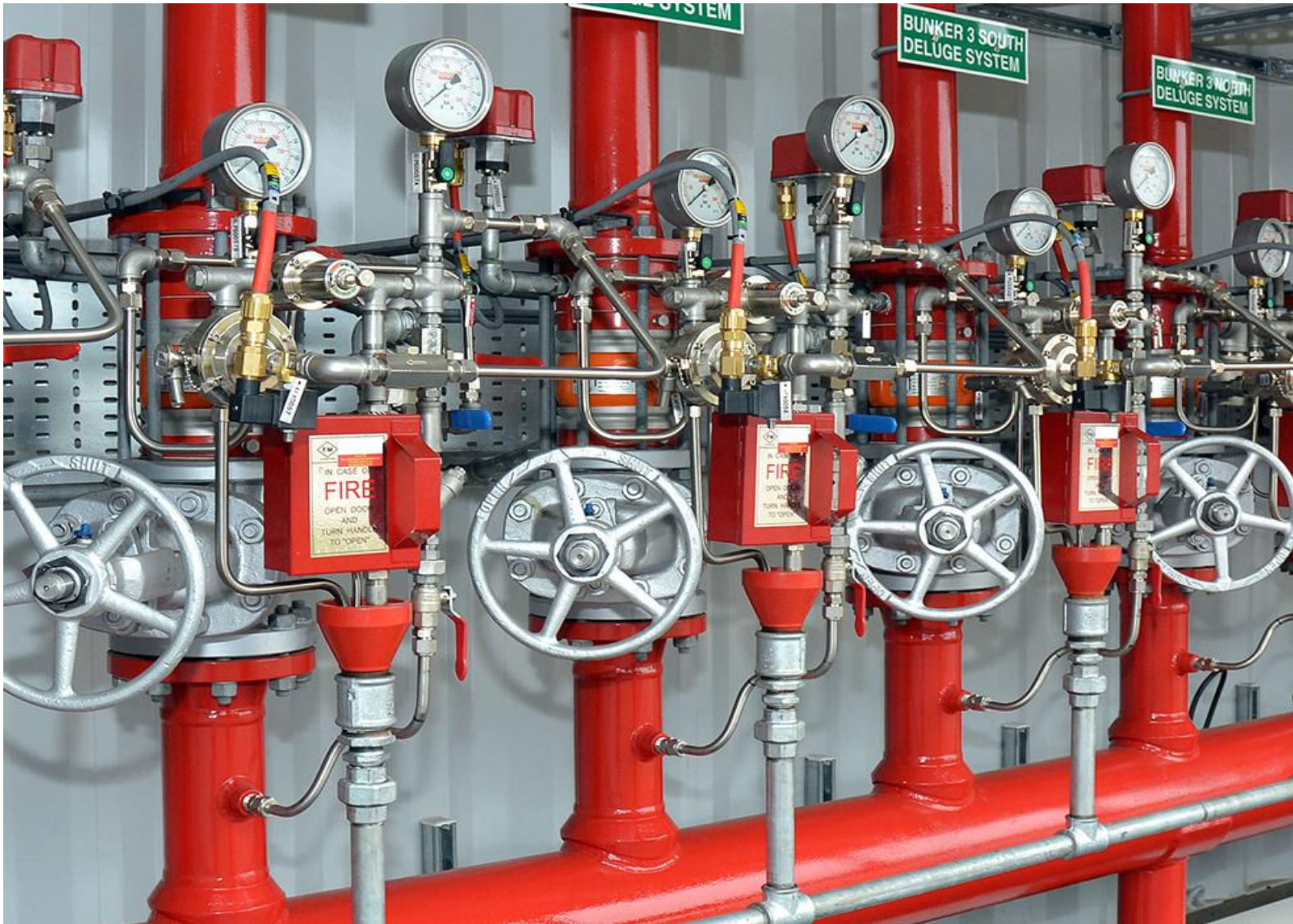


Valves



Valves



-1- Alarm Check Valve

-2- Pre-Action & Deluge Valve



-3- Butterfly Valves

-4- Gate Valve



-5- Check Valves

Alarm Check Valve



FAVB 100R-UL/FM

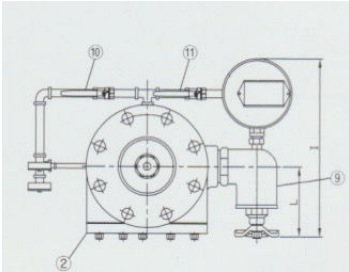


FAVB 200R-(Groove) UL/FM

Specification

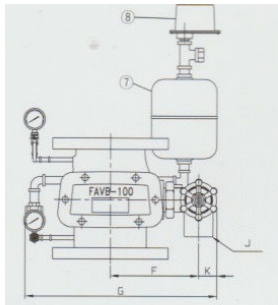
Model No FAVB Series	Approved Standards	Max. Pressure Bar	Test Press. Bar	Direction	Flange/Grooved Standard	Weight in kg	Packing unit
100R	UL/FM	12,1	24,2	Vertical	ANSI B16.1 FF Class 150	38,6	1
100H	FM	20,7	41,4	Vertical	ANSI B16.1 FF Class 150	46,4	1
150R	UL/FM	12,1	24,2	Vertical	ANSI B16.1 FF Class 150	56,2	1
150H	FM	20,7	41,4	Vertical	ANSI B16.1 FF Class 150	70,6	1
200 Flange	UL/FM	17,2	34,4	Vertical	ANSI B16.1 FF Class 150	76,5	1
200 Grooved	UL/FM	17,2	34,4	Vertical	ANSI/AWWA C606	57,6	1

Alarm Check Valve



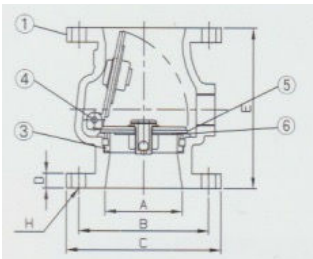
Dimension

Model No	A	B	C	D	E	F	G	H	I	J	K	L
FAVB Series												
100R	100	175	210	24	250	169	415	8-19D	376	50A	50	153
100H	100	200	254	32	266	169	415	8-22D	376	50A	50	153
150R	150	240	280	26	280	199	480	8-23D	391	50A	50	153
150H	150	270	318	37	318	199	80	12-22D	391	50A	50	153
200 Flange	200	298	343	28,5	343	255	650	8-23D	500	50A	75	320
200 Grooved	200	214	219	35	219	275	650	500	320	50A	--	--



Part List

No.	Item	Material	No.	Item	Material
1	Body	Cast Iron 4" / 6" Ductile Iron 4" / 6"	7	Retarding Chamber	SPCC/SPPS
2	Cover	Cast Iron 4" / 6" Ductile Iron 4" / 6"	8	Pressure Switch	--
3	Seat Ring	Bronze	9	Drain Valve	Cast Iron Brass / Ductile Iron Brass
4	Disc & Arm	STS 304	10	Alarm Test Valve	Brass
5	Disc Seat	Viton 4"/6" EPDM 4" 6" 8"	11	Alarm Shut Off Valve	Brass
6	Seat Cover	STS304			



Pre-Action & Deluge Valve

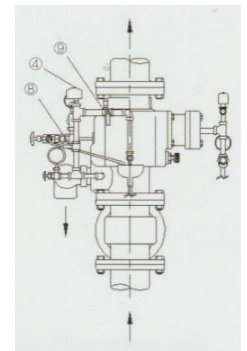
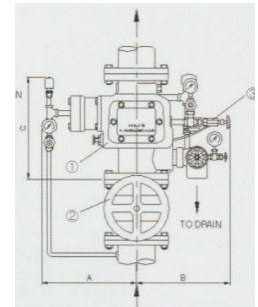
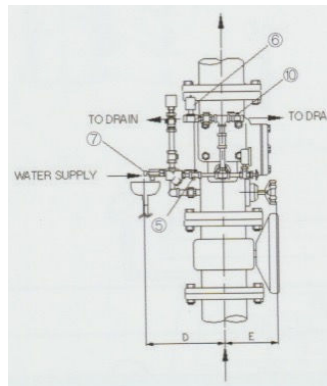
Specification



Model No FAVB Series	Approved Standards	Max. Press. Bar	Test Press Bar	Direction	Flange Size	Weight in kg	Packing unit
100A	UL/FM	12,1	24,2	Vertical	ANSI 150lb FF Type	59	1
150A	UL/FM	12,1	24,2	Vertical	ANSI 150lb FF Type	79	1

Dimension

Packing unit	A	B	C	D	E
1	243	260	367	270	150
1	259	285	372	290	150



Part List

No.	Item	Material	No.	Item	Material
1	Body	Cast Iron	6	Solenoid Valve	---
2	OS&Y Valve	---	7	Drip Check Valve	---
3	Air Control Valve	---	8	PS Test Valve	---
4	Pressure Switch	---	9	PS Signal Control Valve	---
5	Water Supply Valve	---	10	Manual Valve	---

Butterfly Valves



XD381X
Grooved Resilent Butterfly Valve
Gear Operated with temper swift



XD371X
Waffer Resilent Butterfly Valve
Gear Operated with temper swift

Size		Weight	Material Specification	
in "	in cm	in kg		
2"	60	7,98	1. Valve Body	Ductile Iron ASTM A356 65-45-12
2 1/2 "	73	8,59	2. Disc	Ductile Iron + EPDM Coating
3"	89	9,21	3. Stem	STS, 2-piece stem design
4"	114	10,67	4. Gear Box	Ductile Iron ASTM A356 65-45-12
5"	141	13,72	5. Coating	Epoxy
6"	168	18,13	6. Colour	RAL 3000
8"	219	22,73	7. Pressure	24,2 Bar (300 PSI)
10"	273	33,7		
12"	324	48,62		

Size		Weight	Material Specification	
in "	in cm	in kg		
2"	50	8,5	1. Valve Body	Ductile Iron ASTM A356 65-45-12
2 1/2 "	65	8,86	2. Disc	Ductile Iron + EPDM Coating
3"	80	9,47	3. Stem	STS, 2-piece stem design
4"	100	10,87	4. Gear Box	Ductile Iron ASTM A356 65-45-12
5"	125	12,61	5. Coating	Epoxy
6"	150	16,33	6. Colour	RAL 3000
8"	200	21,74	7. Pressure	24,2 Bar (300 PSI)
10"	250	30,79		
12"	300	44,56		



Butterfly Valves



XD371XL
Lugged Wafer Resilient Butterfly Valve
Gear Operated with temper swift

Size		Weight		Material Specification	
in "	in cm	in kg			
2"	50	9,85	1. Valve Body	Ductile Iron ASTM A356 65-45-12	
2 1/2 "	65	10,49	2. Disc	Ductile Iron + EPDM Coating	
3"	80	11,14	3. Stem	STS, 2-piece stem design	
4"	100	14,4	4. Gear Box	Ductile Iron ASTM A356 65-45-12	
5"	125	17,09	5. Coating	Epoxy	
6"	150	21,25	6. Colour	RAL 3000	
8"	200	28,07	7. Pressure	24,2 Bar (300 PSI)	
10"	250	41,49			
12"	300	48,62			



XD311X
Threaded Resilient Butterfly Valve
Gear Operated with temper swift

Size		Weight		Material Specification	
in "	in cm	in kg			
1"	25	7,98	1. Valve Body	Ductile Iron ASTM A356 65-45-12	
1 1/4 "	32	8,59	2. Disc	Ductile Iron + EPDM Coating	
1 1/2 "	40	9,21	3. Stem	STS	
2	50	10,67	4. Gear Box	Ductile Iron ASTM A356 65-45-12	
			5. Coating	Epoxy	
			6. Colour	RAL 3000	
			7. Pressure	24,2 Bar (300 PSI)	

Gate Valve



XZ41X
Flanged Resilent OS&Y
Gate Valve

Size		Weight	Material Specification	
in "	in cm	in kg		
2"	50	14,65	1. Valve Body	Ductile Iron ASTM A356 65-45-12
2 1/2 "	65	17,68	2. Resilent Wedge Disc	Ductile Iron ASTM A356 65-45-12+EPDM
3"	80	23,05	3. O-ring	NBR
4"	100	31,89	4. Stem	STS
5"	125	42,25	5. Bonnet (Gasket)	STS + (EPDM)
6"	150	53,19	6. Yoke Gear Box	Ductile Iron ASTM A356 65-45-12
8"	200	91,3	7. Gland	Epoxy
10"	250	134,61	8. Handwheel	RAL 3000
12"	300	200,04	9. Coating :	Epoxy RAL 3000
			10. Pressure	24,2 Bar (300 PSI)



XZ81X
Grooved Resilent OS&Y
Gate Valve

Size		Weight	Material Specification	
in "	in cm	in kg		
2"	60	11,33	1. Valve Body	Ductile Iron ASTM A356 65-45-12
2 1/2 "	73	12,47	2. Resilent Wedge Disc	Ductile Iron ASTM A356 65-45-12+EPDM
3"	89	16,86	3. O-ring	NBR
4"	114	24,23	4. Stem	STS
5"	141	33,46	5. Bonnet (Gasket)	STS + (EPDM)
6"	168	41,32	6. Yoke Gear Box	Ductile Iron ASTM A356 65-45-12
8"	219	73,66	7. Gland	Epoxy
10"	273	122,34	8. Handwheel	RAL 3000
12"	324	174,56	9. Coating :	Epoxy RAL 3000
			10. Pressure	24,2 Bar (300 PSI)

Gate Valve



ZK51X
Flanged xGrooved Resilient OS&Y
Gate Valve



Z45X
Flanged Resilient NRS
Gate Valve

Size		Weight	Material Specification	
in "	in cm	in kg		
2"	50	13,31	1. Valve Body	Ductile Iron ASTM A356 65-45-12
2 1/2 "	65	15,41	2. Resilient Wedge Disc	Ductile Iron ASTM A356 65-45-12+EPDM
3"	80	19,88	3. O-ring	NBR
4"	100	27,51	4. Stem	STS
5"	125	37,54	5. Bonnet (Gasket)	STS + (EPDM)
6"	150	47,14	6. Yoke Gear Box	Ductile Iron ASTM A356 65-45-12
8"	200	81,98	7. Gland	Epoxy
10"	250	131,82	8. Handwheel	RAL 3000
12"	300	184,98	9. Coating :	Epoxy RAL 3000
			10. Pressure	24,2 Bar (300 PSI)

Size		Weight	Material Specification	
in "	in cm	in kg		
2"	50	9,76	1. Valve Body	Ductile Iron ASTM A356 65-45-12
2 1/2 "	65	10,85	2. Resilient Wedge Disc	Ductile Iron ASTM A356 65-45-12+EPDM
3"	80	15,1	3. O-ring	NBR
4"	100	21,69	4. Stem	STS
5"	125	30,28	5. Bonnet (Gasket)	STS + (EPDM)
6"	150	37,76	6. Yoke Gear Box	Ductile Iron ASTM A356 65-45-12
8"	200	67,51	7. Gland	Epoxy
10"	250	106,58	8. Handwheel	RAL 3000
12"	300	157,76	9. Coating :	Epoxy RAL 3000
			10. Pressure	24,2 Bar (300 PSI)

Gate Valve



Z45XC-2
Flanged Resilient
NRS Gate Valve

Size		Weight		Material Specification	
in "	in cm	in kg			
4"	100	35,75	1. Valve Body	ASTM A356 65-45-12	
5"	125	44,64	2. Resilient Wedge Disc	ASTM A356 65-45-12+EPDM	
6"	150	54,24	3. O-ring	NBR	
8"	200	86,06	4. Stem	STS	
10"	250	117,21	5. Bonnet (Gasket)	ASTM A356 65-45-12 + (EPDM)	
12"	300	180,04	6. Gland	ASTM A356 65-45-12	
			Stem cap	ASTM A356 65-45-12	
			8. Coating :	ASTM A356 65-45-12	
			9. Pressure	24,2 Bar (300 PSI)	



Z85X
Grooved Resilient
NRS Gate Valve

Size		Weight		Material Specification	
in "	in cm	in kg			
2"	60	9,76	1. Valve Body	ASTM A356 65-45-12	
2 1/2 "	73	10,85	2. Resilient Wedge Disc	ASTM A356 65-45-12+EPDM	
3"	89	15,1	3. O-ring	NBR	
4"	114	21,69	4. Stem	STS	
5"	141	30,28	5. Bonnet (Gasket)	ASTM A356 65-45-12 + (EPDM)	
6"	168	37,76	6. Gland	ASTM A356 65-45-12	
8"	219	67,51	7. Handwheel	ASTM A356 65-45-12	
10"	273	106,58	8. Coating :	ASTM A356 65-45-12	
12"	324	157,76	9. Pressure	24,2 Bar (300 PSI)	

Gate Valve



Z55X
Flanged & Grooved Resilient
NRS Gate Valve

in "	Size		Weight		Material Specification
	in cm	in kg			
2"	50				1. Valve Body ASTM A356 65-45-12
2 1/2 "	65	13,79			2. Resilient Wedge Disc ASTM A356 65-45-12+EPDM
3"	80	18,12			3. O-ring NBR
4"	100	24,97			4. Stem STS
5"	125	43,58			5. Bonnet (Gasket) ASTM A356 65-45-12 + (EPDM)
6"	150	75,83			6. Gland ASTM A356 65-45-12
8"	200				7. Handwheel ASTM A356 65-45-12
10"	250				8. Coating : ASTM A356 65-45-12
12"	300				9. Pressure 24,2 Bar (300 PSI)

Check Valves



H44X2
Swing Check Valve Rubber Seal
Flanged End

Size		Weight		Material Specification	
in "	in cm	in kg			
2"	50	11,17	1. Valve Body	ASTM A356 65-45-12	
2 1/2 "	65	16,73	2. Seat Ring	Bronze ASTM B62 (press fit)	
3"	80	22,53	3. Disc	Ductile Iron ASTM A356 65-45-12	
4"	100	34,94	4. Bonnet	Ductile Iron ASTM A356 65-45-12	
5"	125	38,49	5. Hinge (Pin)	ASTM A356 65-45-12 + (EPDM)	
6"	150	65,18	6. Coating :	Epoxy RAL 3000	
8"	200	120,68	7. Pressure	24,2 Bar (300 PSI)	
10"	250	180,88			
12"	300	242,3			



H44X2A
Swing Check Valve Rubber Seal
Flanged End
In accordance with ASME B16.10 CL125

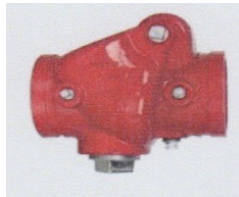
Size		Weight		Material Specification	
in "	in cm	in kg			
2"	50	11,17	1. Valve Body	ASTM A356 65-45-12	
2 1/2 "	65	16,73	2. Seat Ring	Bronze ASTM B62 (press fit)	
3"	80	22,53	3. Disc	Ductile Iron ASTM A356 65-45-12	
4"	100	34,94	4. Bonnet	Ductile Iron ASTM A356 65-45-12	
5"	125	38,49	5. Hinge (Pin)	ASTM A356 65-45-12 + (EPDM)	
6"	150	65,18	6. Coating :	Epoxy RAL 3000	
8"	200	120,68	7. Pressure	24,2 Bar (300 PSI)	
10"	250	180,88			
12"	300	242,3			

Check Valves



H84X
Swing Check Valve Rubber Seal
Grooved end

Size		Weight	Material Specification	
in "	in cm	in kg		
2"	50	3,26	1. Valve Body	ASTM A356 65-45-12
2 1/2 "	65	3,55	2. Disc	ASTM A356 65-45-12
3"	80	4,63	3. Disc Sealing Rinmg	EPDM
4"	100	7,44	4. Spring	AISI 304
5"	125	9,99	5. Seat Ring	ASTM B62 C83600 (Pressed Fit)
6"	150	16,14	6. Coating :	Epoxy RAL 3000 EY3009M
8"	200	26,92	7. Pressure	24,2 Bar (300 PSI)
10"	250	51,9		
12"	300	75,56		



H84X4
Swing Check Valve Rubber Seal
Grooved end / big drain hole

Size		Weight	Material Specification	
in "	in cm	in kg		
2"	50	3,3	1. Valve Body	ASTM A356 65-45-12
2 1/2 "	65	3,65	2. Disc	ASTM A356 65-45-12
3"	80	4,71	3. Disc Sealing Rinmg	EPDM
4"	100	7,66	4. Spring	AISI 304
5"	125	10,07	5. Seat Ring	ASTM B62 C83600 (Pressed Fit)
6"	150	16,37	6. Coating :	Epoxy RAL 3000 EY3009M
8"	200	27,17	7. Pressure	24,2 Bar (300 PSI)
10"	250	52,19		
12"	300	75,89		